

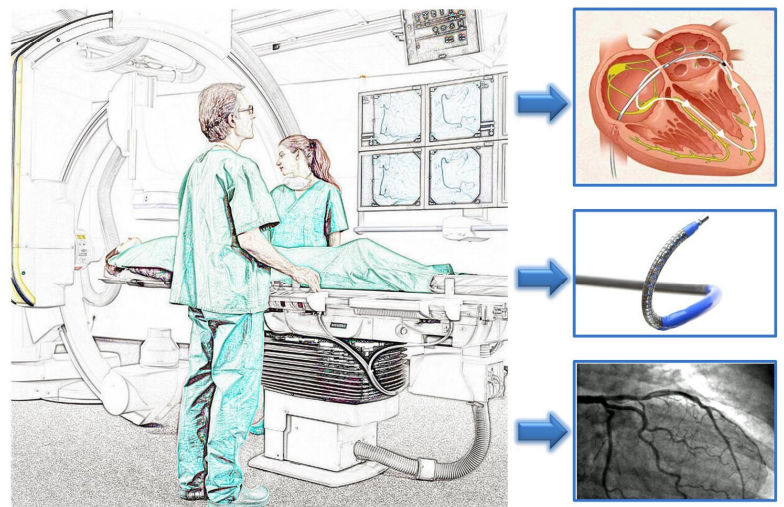
Design of an evaluation/manipulation environment for flexible medical instruments in interventional cardiology

Chunman Fan
C.fan@tudelft.nl
Dept. BioMechanical Engineering
Delft University of Technology
The Netherlands

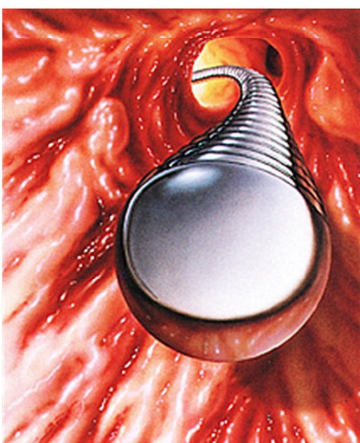
Motivation

During cardiovascular interventions, the interventionist may have difficulties in:

- ✱ *Maneuvering catheters/guide wires through the complex 3D anatomy of the cardiovascular system*
- ✱ *Long term period exposition in radiation environment*



Aiming



- To research on intuitive control method for steerable medical instrument
- To develop a novel intuitive control method for multi-steerable catheters and guide wires
- The results should be compatible with MRI imaging system.